



# SRI SIVANI COLLEGE OF PHARMACY

(Under the Management of Sri Sivani Educational Society, Srikakulam)  
(Estd.2007, Approved by PCI-New Delhi and Affiliated to JNTU, Gurajada-Vizianagaram)  
N.H-16, Chilakapalem Jn., Etcherla Mandal, Srikakulam Dist - 532402.

## YELLOW ALAMANDA

**BOTINICAL NAME:** *ALLAMANDA CATHARITHICA*

**FAMILY:** Apocynaceae

**SYNONYMS:**

**ENGLISH:** Golden trumpet

**HINDI:** Peelaallaamaanda

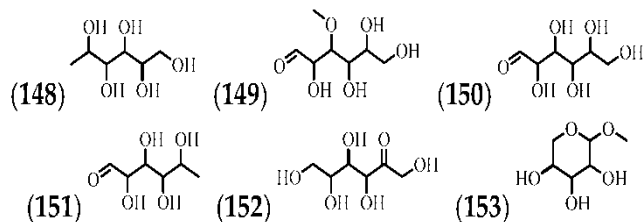
**TAMIL:** Mañçalamaṇṭā

**TELUGU:** Pasupu allamanda



**CHEMICAL CONSTITUENTS:**

- ❖ Numerous phytochemical investigations of plants from the *A. cathartica* have shown the presence of hydrocarbons, alcohols, esters, ethers, aldehydes, ketones, fatty acids, phospholipids, volatile compounds, phenolic compounds, flavonoids, alkaloids, steroids, terpenes, lactones, and carbohydrates



**USES:**

- ❖ Used to treat abscesses
- ❖ Ringworm
- ❖ Ulcers
- ❖ Eczema
- ❖ Used to treat liver tumors
- ❖ Jaundice
- ❖ Splenomegaly
- ❖ Malaria
- ❖ Help uplift your mood and promote a positive mindset
- ❖ In analyses, some species have shown some activity against carcinoma cells, pathogenic fungi, and HIV.